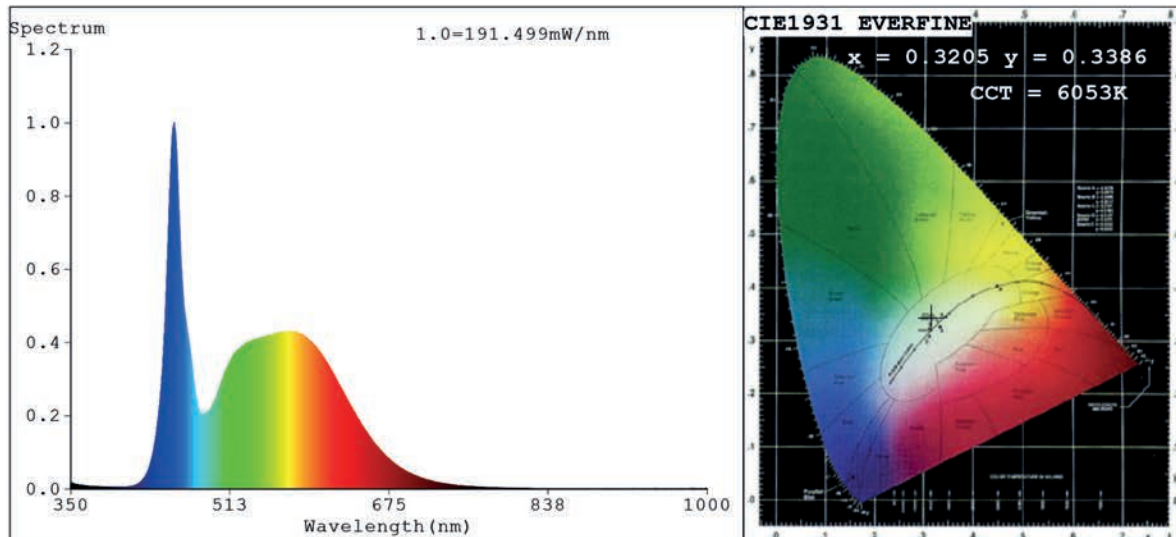


## Spectrum Test Report



### Color Parameters:

Chromaticity Coordinate:  $x=0.3205$   $y=0.3386$   $u'=0.1996$   $v'=0.4745$   
 CCT=6053K (Duv=0.0043) Dominant WL:Ld =497.0nm Purity=4.0%  
 Ratio:R=13.8% G=80.6% B=5.6%; Peak WL:Lp=455.7nm FWHM=18.8nm  
 Render Index:Ra=82.3 CRI=74.7 TM30:Rf=79 Rg=92 Lav=542.6nm  
 R1 =80 R2 =90 R3 =93 R4 =79 R5 =80 R6 =84 R7 =86  
 R8 =66 R9 =2 R10=74 R11=78 R12=53 R13=84 R14=97 R15=75

### Photo Parameters:

Flux = 5292 lm Eff. : 175.97 lm/W Fe = 16.76 W

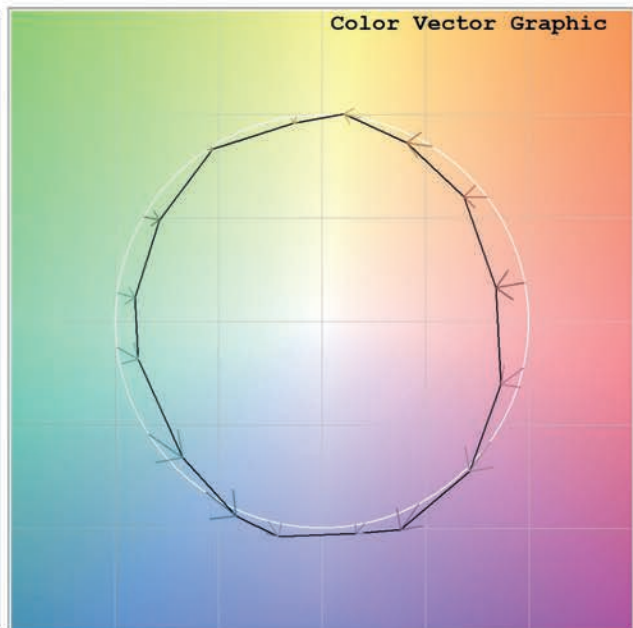
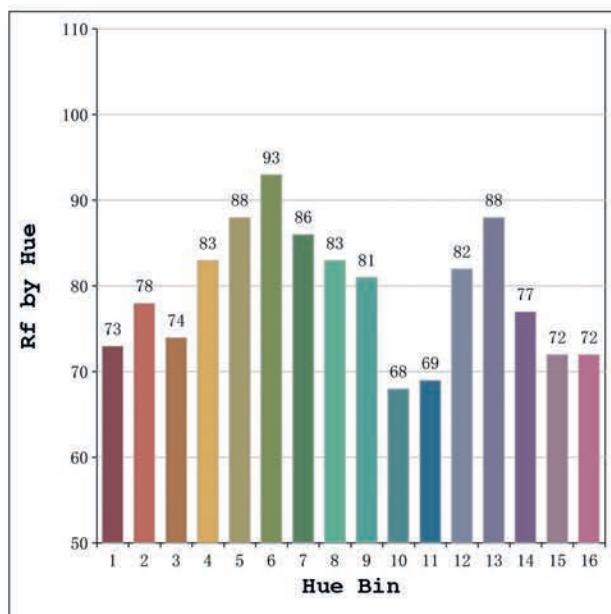
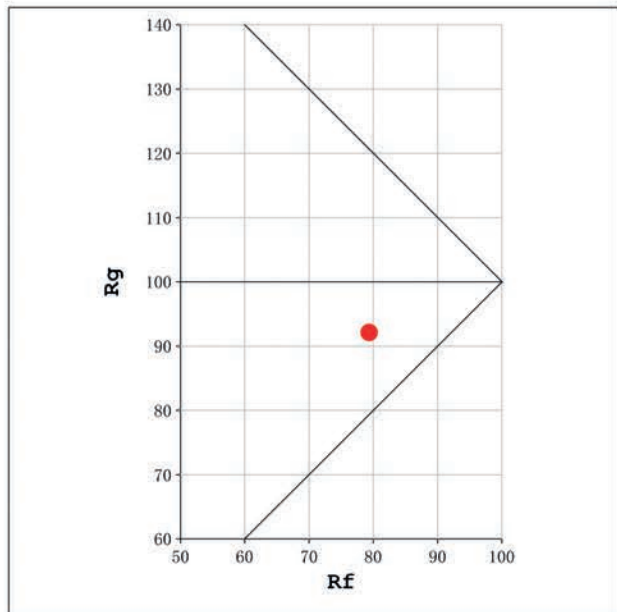
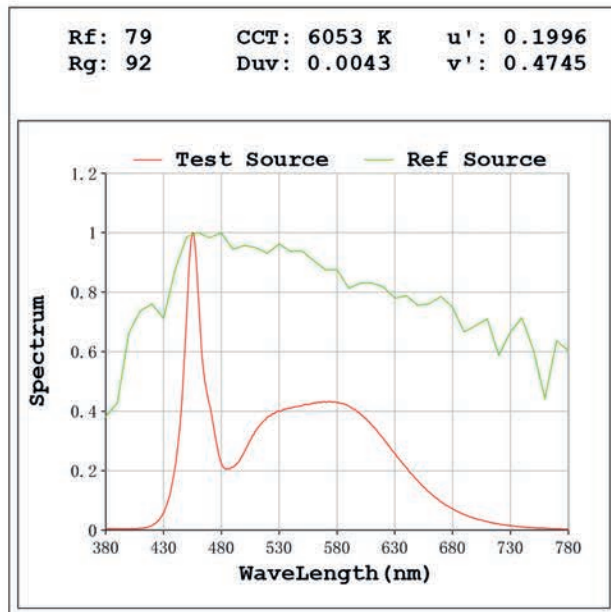
### Electrical parameters:

V = 23.998 V I = 1.253 A P = 30.08 W PF = 1.000

Status: Integral T = 208 ms Ip = 52035 (79%)

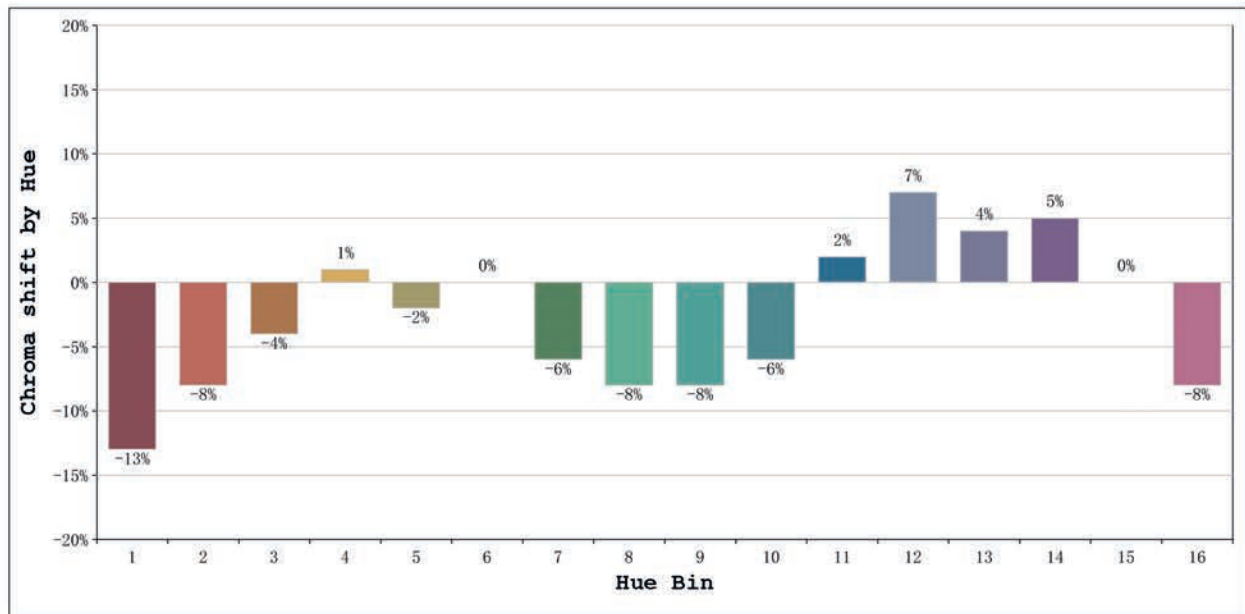
Model:Córdoba High Efficiency  
 Tester:Sergio Carneros  
 Temperature:27Deg  
 Manufacturer:Luz Negra S.L.

Number: 33.210  
 Date:2024-11-21 08:33:35  
 Humidity:35%  
 Remarks:100cm de tira flexible



Model:Córdoba High Efficiency  
 Tester:Sergio Carneros  
 Temperature:27Deg  
 Manufacturer:Luz Negra S.L.

Number: 33.210  
 Date:2024-11-21 08:33:35  
 Humidity:35%  
 Remarks:100cm de tira flexible



			Graphic shift(%)	
Hue Bin	Hue Angle	Rf	Chroma	Hue
1	0.0° - 22.5°	73	-13	0
2	22.5° - 45.0°	78	-8	7
3	45.0° - 67.5°	74	-4	11
4	67.5° - 90.0°	83	1	8
5	90.0° - 112.5°	88	-2	2
6	112.5° - 135.0°	93	0	-1
7	135.0° - 157.5°	86	-6	-2
8	157.5° - 180.0°	83	-8	1
9	180.0° - 202.5°	81	-8	8
10	202.5° - 225.0°	68	-6	18
11	225.0° - 247.5°	69	2	18
12	247.5° - 270.0°	82	7	6
13	270.0° - 292.5°	88	4	-4
14	292.5° - 315.0°	77	5	-13
15	315.0° - 337.5°	72	0	-16
16	337.5° - 360.0°	72	-8	-9

Model:Córdoba High Efficiency  
 Tester:Sergio Carneros  
 Temperature:27Deg  
 Manufacturer:Luz Negra S.L.

Number: 33.210  
 Date:2024-11-21 08:33:35  
 Humidity:35%  
 Remarks:100cm de tira flexible